

# as-is.la

## Jesse Benson: *Organizer*

August 12–September 23, 2023  
Opening reception: Saturday, August 12, 2-5 pm



In the “dialectic of order and chaos” that structures all poetic discourse, veteran Los Angeles artist Jesse Benson (b. 1978, Orange, CA) places himself squarely in the camp of order as his exhibition title, *Organizer*, so clearly suggests. But this presentation of new and recent paintings, sculptures, and artifacts argues the position in favor of order so relentlessly that, as it approaches the point of absurdity, a viewer might suspect that the artist is, if secretly, on the side of a wild and liberating chaos, after all. The two positions being irreconcilable, it is left then to the viewers to examine the evidence and judge the artist’s real and true intentions for themselves.

*Organizer* is presented in conjunction with Benson’s “Packaging” (2003), an artwork modeled (if somewhat cheekily) on Marcel Duchamp’s “La Boite-en-valise” and offered again here on what is the 20th anniversary of its first presentation.



*Packaging, 2003/2023*

Ephemera from all projects completed in grad school at Otis (2001-2003), vacuum-formed plastic, plexiglas, silkscreen on board. Initially exhibited in 2003 in first commercial gallery opportunity after graduation (sixteen:one gallery, Los Angeles). Designed to be re-exhibited at later date. Shown here in its 20-year anniversary.

Installation dimensions variable

Individual dimensions 21 x 28.5 x 3 inches



*Survival Sculpture 4 (Old Money), 2023*

Grandfather clock case, powder-coated metal, painted wood stage



*Compartmentalization Painting 9 (Correction), 2023*

Oil and gesso on panel in aluminum frame  
11 x 17 inches



*Compartmentalization Painting 11 (Irvine), 2023*

Oil and gesso on panel in aluminum frame  
8.5 x 11 inches



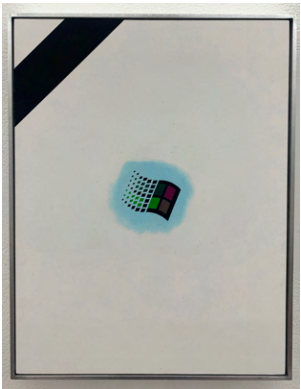
*Compartmentalization Painting 8 (Loss Prevention), 2023*  
Oil and gesso on panel in aluminum frame  
8.5 x 11 inches



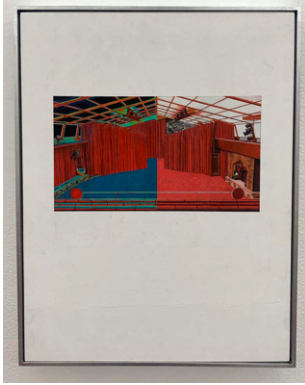
*Compartmentalization Painting 10 (Grief Counselor), 2023*  
Oil and gesso on panel in aluminum frame  
8.5 x 11 inches



*Compartmentalization Painting 11 (Alcatraz), 2023*  
Oil and gesso on panel in aluminum frame  
8.5 x 11 inches



*Compartmentalization Painting 6 (Window), 2023*  
Oil and gesso on panel in aluminum frame  
8.5 x 11 inches



*Compartmentalization Painting 2 (Pavilion), 2023*  
Oil and gesso on panel in aluminum frame  
8.5 x 11 inches



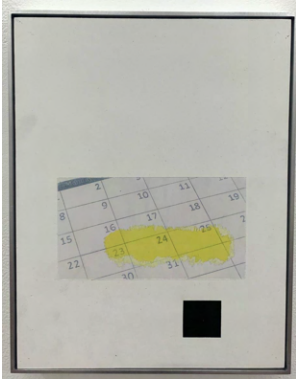
*Delicacy Painting 1 (Grafter), 2023*  
Oil, gesso, and flexible fabric and plastic bandages on panel in aluminum frame  
8.5 x 11 inches



*Compartmentalization Painting 4 (Desert Landscape), 2023*  
Oil and gesso on panel in aluminum frame  
8.5 x 11 inches



*Compartmentalization Painting 1 (Past and Future Failures), 2023*  
Oil and gesso on panel in aluminum frame  
8.5 x 11 inches



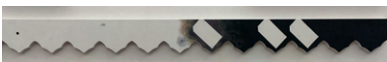
*Compartmentalization Painting 5 (Impending), 2023*  
Oil and gesso on panel in aluminum frame  
8.5 x 11 inches



*Compartmentalization Painting 7 (Keep It Together), 2023*  
Oil and gesso on panel in aluminum frame  
8.5 x 11 inches



*Compartmentalization Painting 3 (State Line), 2023*  
Oil and gesso on panel in aluminum frame  
8.5 x 11 inches



*Segue Painting 1, 2023*  
Oil and gesso on architectural trim  
4 x 48 inches



*Segue Painting 2, 2023*  
Oil and gesso on architectural trim  
4 x 48 inches



*Segue Painting 3, 2023*  
Oil and gesso on architectural trim  
4 x 48 inches





*Segue Painting 4*, 2023  
Oil and gesso on architectural trim  
4 x 48 inches



*Survival Sculpture 6 (Phalanx)*, 2023  
Die-cut sheet metal powder-coated  
17 x 108 inches



*Servalier Painting 1 (Boarding Pass)*, 2023  
Oil and gesso on ceramic mold  
8.5 inches diameter



*Survival Sculpture 2 (Secretary)*, 2023  
Stained wood, red ink pens  
7.5 x 88 inches



*Delicacy Painting 2 (Separation)*, 2023  
Oil, gesso, and flexible fabric bandages on panel in aluminum frame  
34 x 22 inches



*Segue Painting 5, 2023*  
Oil and gesso on architectural trim  
4 x 48 inches



*Segue Painting 6, 2023*  
Oil and gesso on architectural trim  
4 x 48 inches



*Segue Painting 7, 2023*  
Oil and gesso on architectural trim  
4 x 48 inches



*Excellence Painting 2, 2023*  
Oil and gesso on panel with hinges  
78 x 36 x 1.875 inches



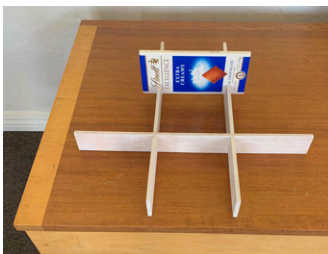
*Arrival/Departure Painting 1 (Ski Trip Tahoe '95, Baltic Cruise '08), 2023*  
Oil and gesso on panel in aluminum frame  
34 x 22 inches



*Survival Sculpture 1 (Emergency Contact), 2023*  
First-aid kit box  
15 x 18 inches



*Survival Sculpture 5 (Sycophant), 2023*  
Stained wood and metal side-table, hinges



*Survival Sculpture 3 (Assistant Manager), 2023*  
Painted wood, cardboard box for "Lindt Excellence Extra Creamy" chocolate bar